



Location Platform Support for Utilities

Mobile | Web | Desktop | Enterprise

Industries Served

Electric, Gas, Water, Wastewater, and Telecommunications

Use Cases

Asset Management
Data Analysis
Operational Awareness
Communication with Customers
Field Data Collection
Location Enablement

Solutions & Services

Database Design and Implementation
Analytical Process Design and Model Creation
Web and Mobile Application Support
System Integration
Knowledge Transfer

Product Knowledge

Oracle, SQL Server, Windows, Mac, JavaScript, iOS, WPF, Android, Windows Mobile, jQuery, .NET, Dojo, HTML 5, ArcGIS Platform (Desktop, Server, Mobile, Online, Portal)

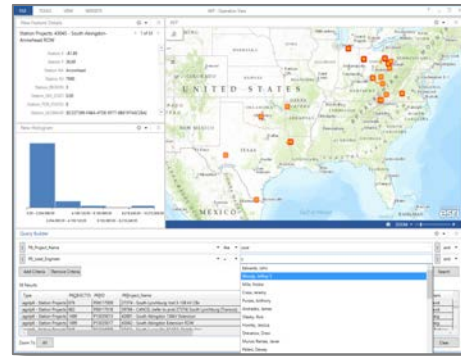
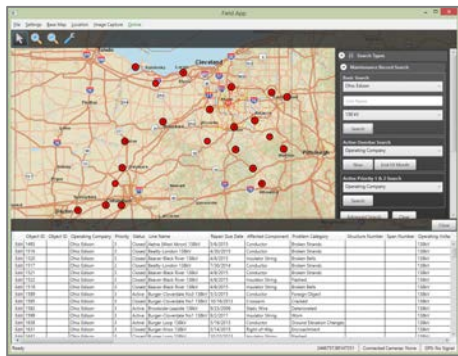
Utilities of all sizes have improved their business operations using Swova's technical and professional services to successfully implement Esri's location platform for data maintenance, analysis, field data collection, and operational awareness.

Challenge

Knowing where assets are located, when they've last been maintained, service call and outage report locations, streamlining data collection from the field, allocating resources appropriately, analyzing service areas, communicating information to customers, and preparing for and responding to emergencies can pose challenges for utilities of all sizes.

Solution

Implementing a location platform throughout your organization improves overall efficiency and customer satisfaction. Swova's professional and technical services can support the planning, design, and implementation of your location platform. We provide complete, end-to-end solutions aimed at your organization's requirements.



About Swova

Swova is a leading provider of GIS professional services and solutions, helping organizations successfully implement location technology since our inception in 2004. We specialize in the design, development, implementation, and integration of GIS, web server and database server technologies. We have experience serving utilities of all sizes and our team of industry and technical experts offer an agile approach to give you optimal service and support.